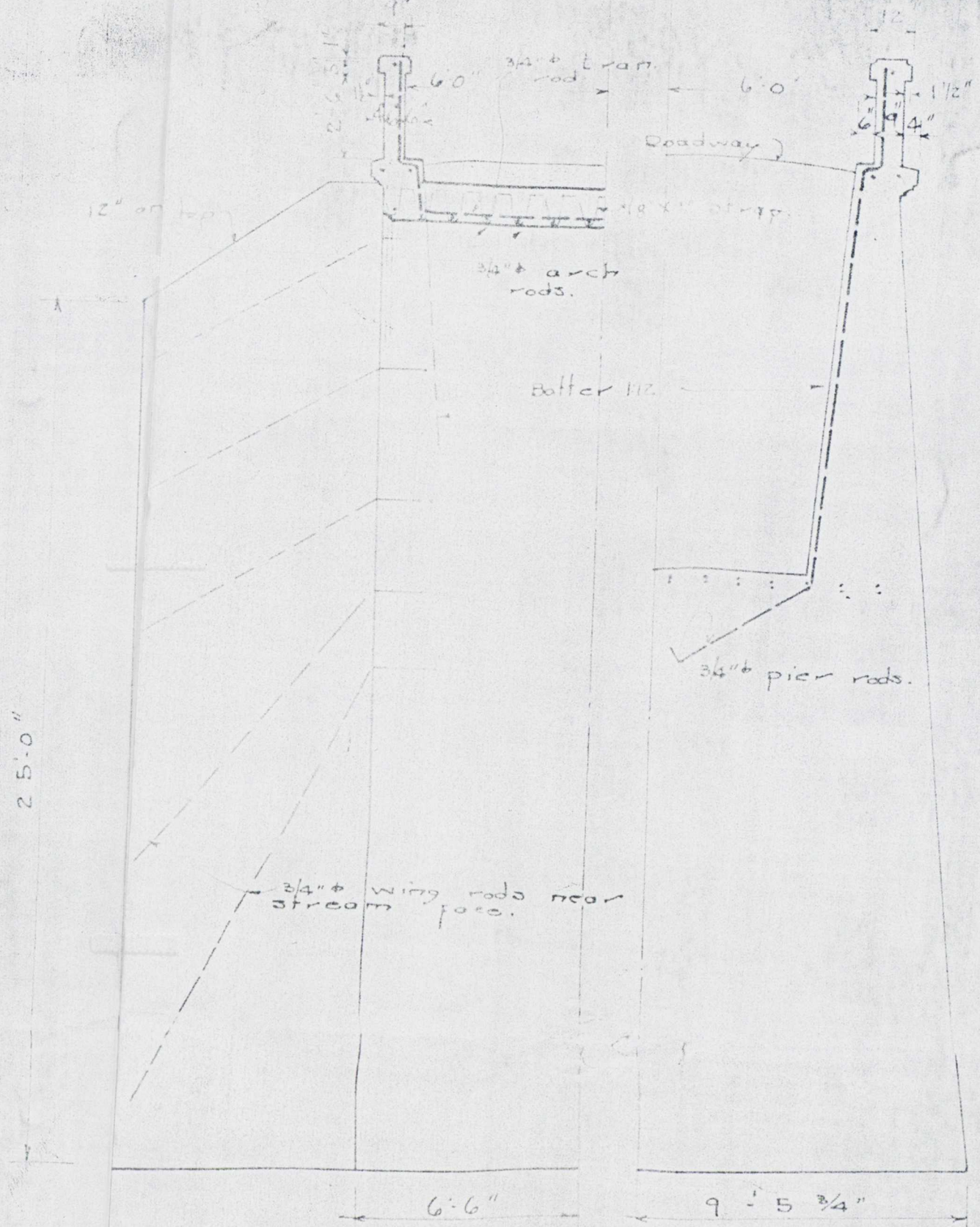


ELEVATION.

2 - 65' spans - 12' Roadway  
ILLINOIS RIVER BRIDGE  
OVER  
ILLINOIS RIVER  
BENTON CO, ARK

Jan. 6, 1922 Revision of plan of July 25, 21  
Daniel B. Luten  
Designing Engineer  
Indianapolis, Ind.

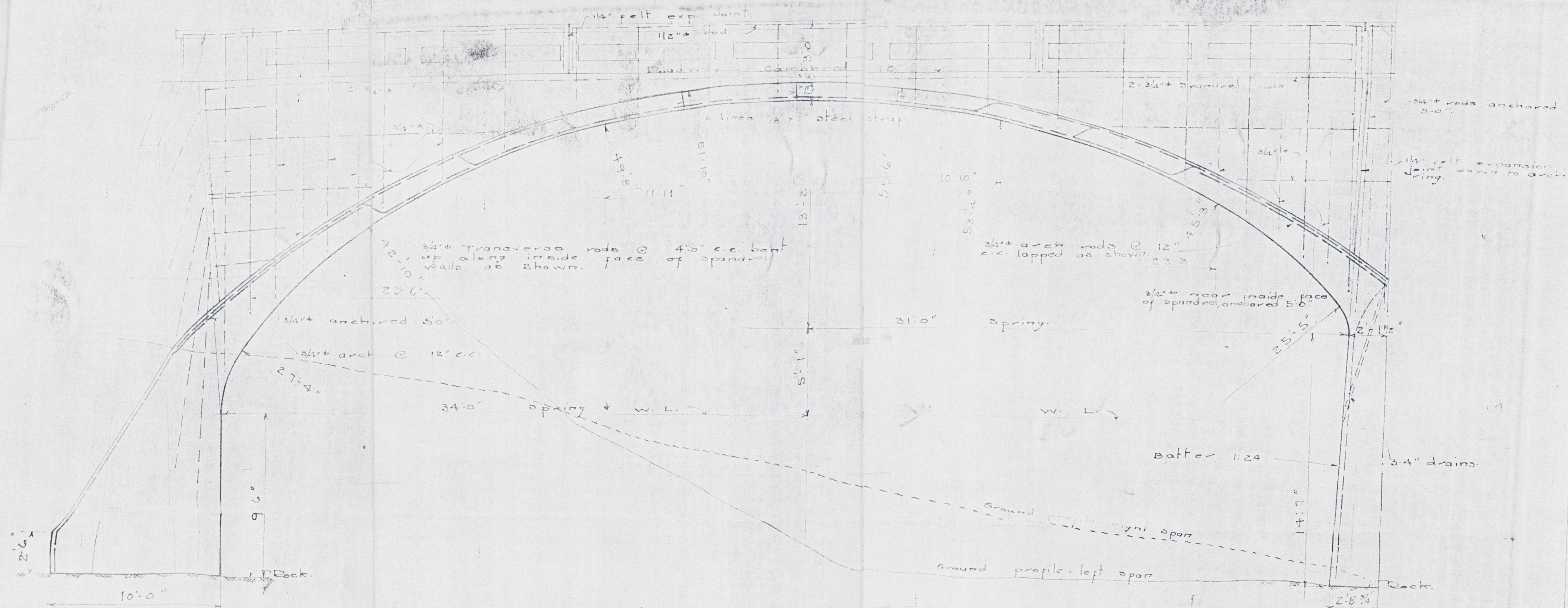




HALF SEC. of CROWN.

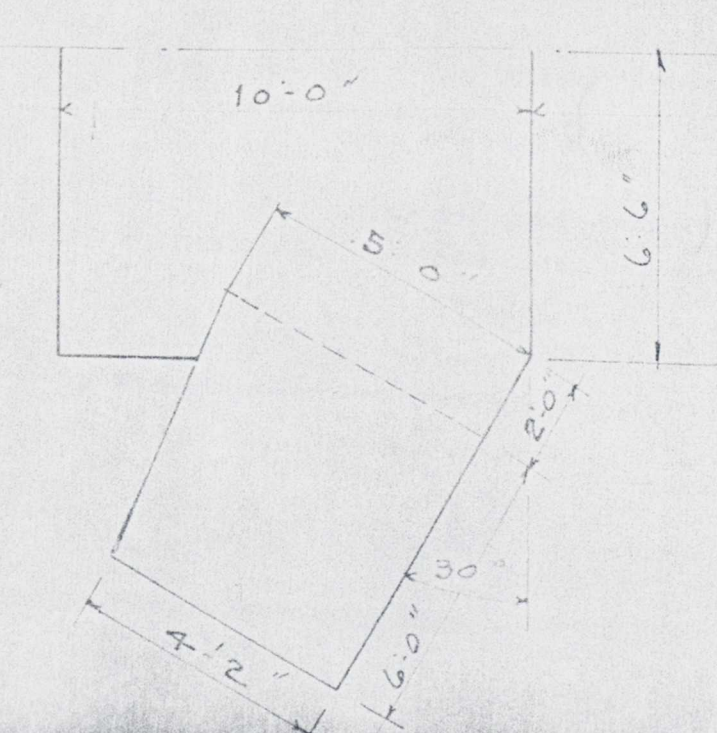
HALF SEC. of PIER.

Note: This sharp end on upstream only.



HALF SEC. PARALLEL TO ROADWAY

QUARTERED FOUNDATION PLAN.



ILLINOIS RIVER BRIDGE  
OVER  
ILLINOIS RIVER  
BENTON CO, ARK.

Jan 6 1922  
Revision of plan of July 25 '21.  
Daniel B. Luten  
Designing Engineer  
Indianapolis, Ind.

